

Save time and reduce errors with automated transfers of submittals and RFIs.

The **Newforma Konekt Connector for Procore** makes it easier than ever for the construction and design teams to quickly review submittals and RFIs.



Newforma Konekt Connector Benefits



Maintain team processes.

Project team members can work in their system of choice without altering their existing review processes.



Improve efficiency and free up time.

Speed up processes and reduce the time required for manual data entry. By freeing up time for architects and contractors, they can now focus on other important tasks.



Reduce potential errors.

Reduce the risk of errors that can result from manual data entry or other manual processes. This can help improve the quality of construction projects and reduce reworks.



Streamline communication.

Avoid communication gaps and misunderstandings between different stakeholders using different systems.



Keep everyone on track.

With email notifications and reminders, your team and your external stakeholders are kept in the loop.



Keep Procore secure.

Permissions are linked to the Newforma Konekt User's Procore account, limiting access to the projects and permissions you grant external users.

KEY FEATURES

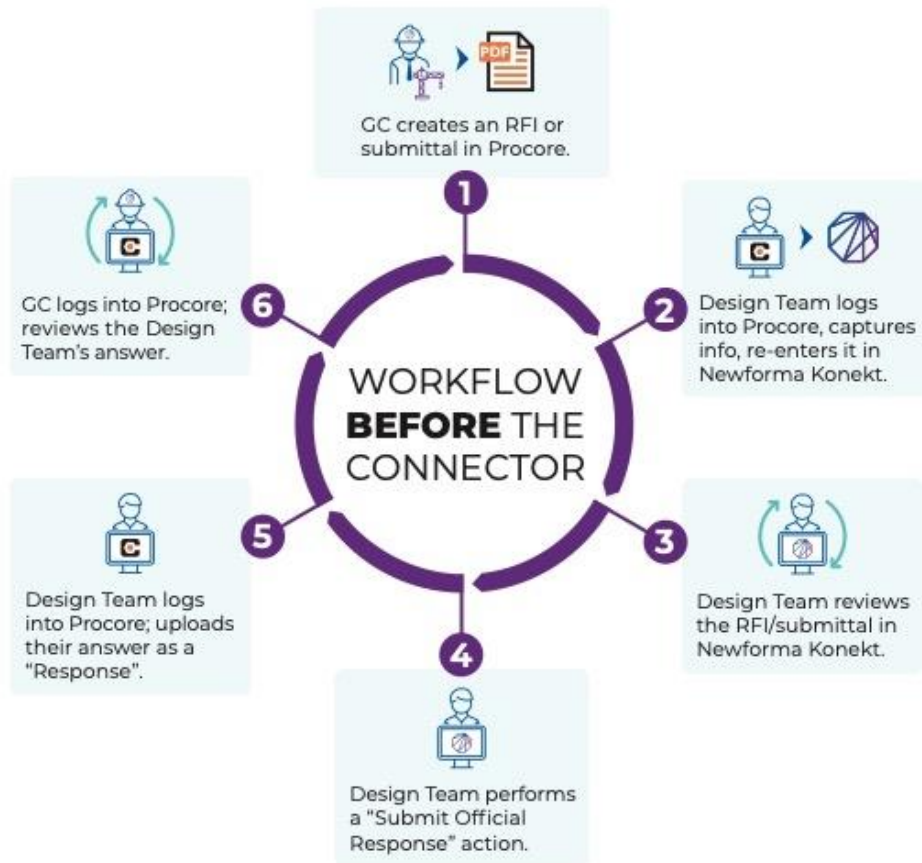
Automatically transfer submittals and RFIs between systems.

Automatically transfer Submittals and RFIs between Procore and Newforma Konekt.

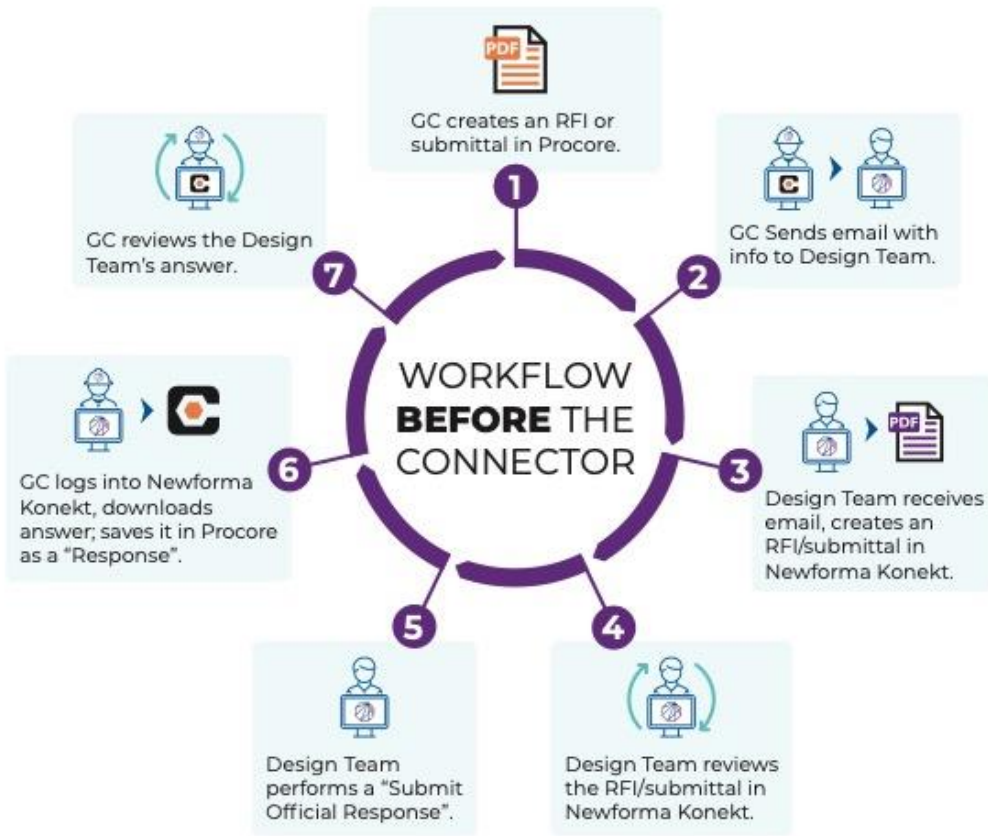
Complete the review process in Newforma Konekt.

Forward received submittals and RFIs for review and take action on the next step of your workflow.

Newforma Konekt Procure Connector for General Contractors



Newforma Konekt Procore Connector for Design Teams



Getting Started with Newforma Konekt Connector for Procore

DOCUMENTATION

Getting started for Procore administrators

Install the Newforma Konekt app in your company's Procore account and set up project webhooks.

Getting started for Newforma Konekt admins

Configure the Procore connector in your Newforma Konekt environment to manage submittals and RFIs.



Setup in Procore

There are two main steps a Procore administrator should perform to enable automated transfers of submittals and RFIs to Newforma Konekt. [Learn More](#)

1. Install the Newforma Konekt app.

Install the Newforma Konekt app from the [Procore Marketplace](#) to your company in Procore.

2. Configure project webhooks.

Configure the [Webhooks](#) feature to receive notifications when submittals and RFIs are created and updated.



Setup in Newforma Konekt

After the setup is complete in Procore, a Newforma Konekt admin must configure the connector and project connection. [Learn More](#)

Configure submittals

Map Newforma Konekt responses to equivalent Procore statuses and define the purpose field for incoming submittals.

Configure RFIs

Define the RFI type field for incoming RFIs and select what happens when RFIs are reopened in Procore.



What do you want to see next?

If you have suggestions for features that would make your work easier, tell the Newforma Konekt Development Team by submitting and voting on ideas in the [Ideas Portal](#).